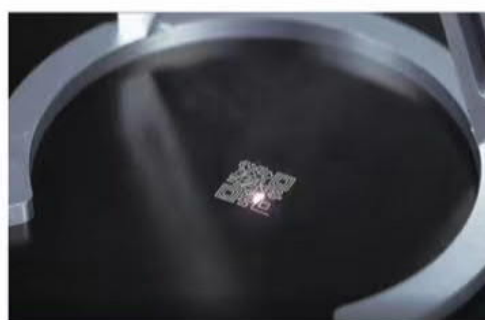


## 高品质-手持式光纤激光打标机

HIGH QUALITY - PORTABLE FIBER LASER MARKING MACHINE



### BEJ-SC-J20 / BEJ-SC-J30 / BEJ-SC-J50

激光功率	打标幅面	打标内容	打标深度	工作电压	冷却方式	订制
Laser power	Marking area	Marking content	Marking depth	Working voltage	Cooling way	NS
20/30/50W	70x70mm 110x110mm	英文、数字、中文、图形 English, numbers, Chinese, graphics	0.01-1mm (视材料可调) Depending On The Material Is Adjustable	220V/50Hz	Air cooling 风冷	SP 支持

### 产品特点 Product Features:

- ◆ 整机设计紧凑, 操作简单易上手
- ◆ 安全、环保、无维护
- ◆ 系统功能强大, 高效、高速、稳定
- ◆ 运用广泛、字迹清晰美观、不磨损

方便轻巧, 可轻松在各种工况下标记。高速扫描振镜, 体积小、速度快、定位精确。激光器使用寿命长, 免维护。整机一体化结构, 小巧紧凑, 人机对话界面友好, 所见即所得, 操作简单易上手。

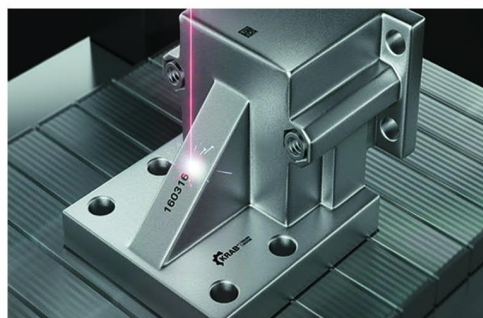
自主研发, 可根据客户需求订制、修改、增加、减少功能等。根据国人使用习惯研发, 更适合国人使用。简单、人性化、可执行。在故障、问题处理上更及时快捷。采用可编程器件与高速高精度 DA 集成电路, 加工定位精准, 速度快, 运用全光藕隔离技术, 整机系统功耗低, 稳定性好, 性能强, 专为激光机标识量身设计。

### 应用范围 The Product Application:

光纤激光机是目前国际较先进激光标记设备之一, 具有光束质量好, 体积小、速度快、工作寿命长、安装灵活方便以及免维护等特点, 可以通过黑色(氧化)打标、浅沟打标、深沟打标等方式, 对多种金属进行加工。广泛应用于电子、食品、饮料、马达、管材、电池、五金、汽车配件、不锈钢制品等行业。

## 光纤激光打标机-台式

### FIBER LASER MARKING MACHINE - DESKTOP



BEJ-20W、30W、50W、100WTS

激光功率	打标幅面	打标内容	打标深度	工作电压	冷却方式	订制
Laser power	Marking area	Marking content	Marking depth	Working voltage	Cooling way	NS
20/30/50/100W	65/110/150mm 175/200/300mm	英文、数字、中文、图形 English, numbers, Chinese, graphics	0.01-1mm (视材料可调) Depending On The Material Is Adjustable	220V/50Hz	Air cooling 风冷	SP 支持

### 产品特点 Product Features:

广泛应用于具有高反特性的金、银、铜、铝及不锈钢和部分非金属材料的打标、精密加工、图文雕刻等领域。  
Widely used in gold, silver, copper, aluminum, stainless steel and some non-metallic materials with high anti reflection characteristics, such as marking, precision machining, graphic engraving and other fields.

开放式的台面设计，生产更加高效；

Open table design, more efficient production.

标配辅助红光聚焦系统，快速定位焦距；

Standard auxiliary red light focusing system for fast positioning of focal length.

配备高速振镜，足功率激光器，正版控制卡，超长质保；

Equipped with high-speed and high-quality galvanometer, full power laser, genuine control card, ultra long warranty.

### 应用范围 The Product Application:

金银钻石、卫生洁具、食品包装、烟草打标、啤酒打标、饮品打标、药品包装、医疗器械、眼镜钟表、汽车配件、塑料纸料、电子五金、黄金金条、航空、飞机制造、弹体打标、防爆；

Widely used in gold and silver and diamond, sanitary ware, food packaging, tobacco marking, beer marking, drinks marking, pharmaceutical packaging, medical equipment, glasses watches and clovks, auto parts, plastic material, electronic hardware. gold bullion, aviation, aircraft manufacturing, projectile arking, explosion-proof.

## 光纤激光打标机-桌面一体

FIBER LASER MARKING MACHINE - DESKTOP ONENESS



BEJ-20W、30W、50W、100WZM

激光功率	打标幅面	打标内容	打标深度	工作电压	冷却方式	订制
Laser power	Marking area	Marking content	Marking depth	Working voltage	Cooling way	NS
20/30/50/100W	65/110/150 175/200/300mm	英文、数字、中文、图形 English, numbers, Chinese, graphics	0.01-1mm (视材料可调) Depending On The Material Is Adjustable	220V/50Hz	Air cooling 风冷	SP 支持

### 产品特点 Product Features:

桌面一体化设计，可以将办公桌面变成一个小型的激光标记站；

The integrated desktop design can turn the desk into a small laser marking station.

无耗材，低耗电，功耗小于500W；

No consumables, low-power, power consumption is less than 500W.

完全风冷，不需要水冷机，能耗降低；

Air cooled completely, do not need water cooling machine, reduce energy consumption.

可选电池供电方式，满足各种现场打标需求；

Optional battery-powered mode to meet various on-site marking requirements.

### 应用范围 The Product Application:

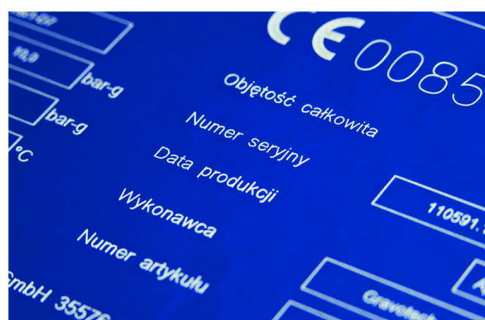
金银钻石、卫生洁具、食品包装、烟草打标、啤酒打标、饮品打标、药品包装、医疗器械、眼镜钟表、汽车配件、塑料纸料、电子五金、黄金金条、航空、飞机制造、弹体打标、防爆；

Widely used in gold and silver and diamond, sanitary ware, food packaging, tobacco marking, beer marking, drinks marking, pharmaceutical packaging, medical equipment, glasses watches and clovks, auto parts, plastic material, electronic hardware. gold bullion, aviation, aircraft manufacturing, projectile arking, explosion-proof.



## 光纤激光打标机-分体式

FIBER LASER MARKING MACHINE - SPLIT TYPE



BEJ-20W、30W、50W、100WFT

激光功率	打标幅面	打标内容	打标深度	工作电压	冷却方式	订制
Laser power	Marking area	Marking content	Marking depth	Working voltage	Cooling way	NS
20/30/50/100W	65/110/150mm 175/200/300mm	英文、数字、中文、图形 English, numbers, Chinese, graphics	0.01-1mm (视材料可调) Depending On The Material Is Adjustable	220V/50Hz	Air cooling 风冷	SP 支持

### 产品特点 Product Features:

桌面分体式，体积小，重量轻，操作方便；

Designed for the gift industry, it is portable, small in size, light in weight and easy to operate.

无耗材，低耗电，功耗小于500W；

No consumables, low-power, power consumption is less than 500W.

完全风冷，不需要水冷机，能耗降低；

Air cooled completely, do not need water cooling machine, reduce energy consumption.

可选电池供电方式，满足各种现场打标需求；

Optional battery-powered mode to meet various on-site marking requirements.

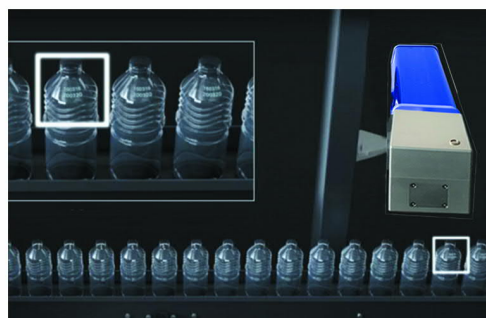
### 应用范围 The Product Application:

金银钻石、卫生洁具、食品包装、烟草打标、啤酒打标、饮品打标、药品包装、医疗器械、眼镜钟表、汽车配件、塑料纸料、电子五金、黄金金条、航空、飞机制造、弹体打标、防爆；

Widely used in gold and silver and diamond, sanitary ware, food packaging, tobacco marking, beer marking, drinks marking, pharmaceutical packaging, medical equipment, glasses watches and clovks, auto parts, plastic material, electronic hardware. gold bullion, aviation, aircraft manufacturing, projectile arking, explosion-proof.

## 光纤激光打标机-飞行在线式

### FIBER LASER MARKING MACHINE - FLYING ONLINE



BEJ-20W、30W、50W、100WFX

激光功率	打标幅面	打标内容	打标深度	工作电压	冷却方式	订制
Laser power	Marking area	Marking content	Marking depth	Working voltage	Cooling way	NS
20/30/50/100W	65/110/150mm 175/200/300mm	英文、数字、中文、图形 English, numbers, Chinese, graphics	0.01-1mm (视材料可调) Depending On The Material Is Adjustable	220V/50Hz	Air cooling 风冷	SP 支持

### 产品特点 Product Features:

适用于：食品包装、药品包装、电线电缆、酒瓶、矿泉水瓶、纸盒等产品生产日期的标记；

Applicable to: marking the production date of food packaging, pharmaceutical packaging, wires and cables, wine bottles, mineral water bottles, cartons and other products.

具备X、Y、Z三轴可调，配合编码器、传感器、数据接口，更易于集成生产线；

With X, Y, Z three-axis adjustable, with encoders, sensors, and data interfaces, it is easier to integrate the production line.

激光头0-180度旋转，灵活适配产线位置要求；

The laser head rotates 0-180 degrees to flexibly adapt to the location requirements of the production line.

### 应用范围 The Product Application:

金银钻石、卫生洁具、食品包装、烟草打标、啤酒打标、饮品打标、药品包装、医疗器械、眼镜钟表、汽车配件、塑料纸料、电子五金、黄金金条、航空、飞机制造、弹体打标、防爆；

Widely used in gold and silver and diamond, sanitary ware, food packaging, tobacco marking, beer marking, drinks marking, pharmaceutical packaging, medical equipment, glasses watches and clovks, auto parts, plastic material, electronic hardware. gold bullion, aviation, aircraft manufacturing, projectile arking, explosion-proof.



## 紫外激光打标机-台式

### UV LASER MARKING MACHINE - DESKTOP



BEJ-UV-3W、5W、7W、10W、12W、15W、20W、25WTS

激光功率	打标幅面	打标内容	打标深度	工作电压	冷却方式	订制
Laser power	Marking area	Marking content	Marking depth	Working voltage	Cooling way	NS
3W-25W	65/110/150mm 175/200/300mm	英文、数字、中文、图形 English, numbers, Chinese, graphics	0.01-1mm (视材料可调) Depending On The Material Is Adjustable	220V/50Hz	Air cooling 风冷	SP 支持

### 产品特点 Product Features:

紫外激光器属于冷光源，热影响区小，大多数材料能有效的吸收紫外光。可加工许多红外和可见光激光器加工不了的材料；适用于：玻璃、皮革和绝大多数通用塑料以及部分工程塑料，本色塑料、白色塑料、有色塑料、黑色塑料，如：PP、PE、PBT、PET、PA、ABS、POM、PS、PC、PUS、EVA等材料，可标记出黑色，白色字迹。UV laser is a cold light source with a small heat-affected zone, and most materials can effectively absorb ultraviolet light. Can process many infrared and visible laser processing Indispensable materials, Suitable for : Glass, leather and most general-purpose plastics and some engineering plastics, natural plastics, white plastics, colored plastics, black plastics,Such as: PP, PE, PBT, PET, PA, ABS, POM, PS, PC, PUS, EVA and other materials, can be marked with black and white writing.

### 应用范围 The Product Application:

牲畜耳标、灯开关、化妆品包装材料、汽车内部按钮、座椅、门把手、仪表板、PBT电器连接件、发动机罩元件保险盒和气帽、防伪标签、ABS键盘、HDPE刚性容器和容器盖、尼龙和集装箱锁扣、文具、家电外壳等。Livestock ear tags, light switches, cosmetic packaging materials, automotive interior buttons, seats, door handles, dashboards, PBT electrical connectors, engine covers component fuse boxes and air caps, anti-counterfeiting labels, ABS keyboards, HDPE rigid containers and container lids, nylon and container locks, stationery, home appliance shells, etc.

## 二氧化碳激光打标机-台式

### CO<sup>2</sup> LASER MARKING MACHINE - DESKTOP



BEJ-CO<sup>2</sup>-20W、30W、60W、150WTS

激光功率	打标幅面	打标内容	打标深度	工作电压	冷却方式	订制
Laser power	Marking area	Marking content	Marking depth	Working voltage	Cooling way	NS
20/30/60/150W	65/110/150mm 175/200/300mm	英文、数字、中文、图形 English, numbers, Chinese, graphics	0.01-1mm (视材料可调) Depending On The Material Is Adjustable	220V/50Hz	Air cooling 风冷	SP 支持

### 产品特点 Product Features:

二氧化碳激光用于非金属材料类的产品标记；  
The CO<sub>2</sub> laser is used for product marking of non-metallic materials.

运营成本低，无耗材，几乎不需要维护。  
Low operating costs, no consumables, almost no maintenance.

高速性能，适用于大批量加工和生产线。  
High-speed performance, suitable for mass processing and production lines.

永久性标记，不会被涂抹或擦掉。  
Permanent mark, will not be smeared or wiped off.

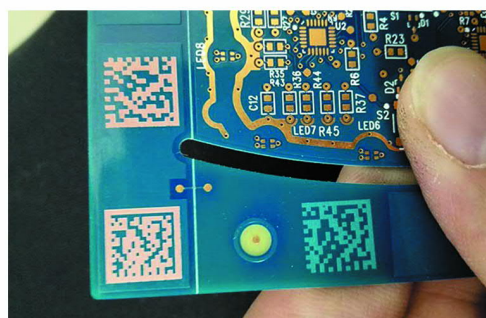
### 应用范围 The Product Application:

食品包装、药品包装、电线电缆、玻璃酒瓶、矿泉水瓶、纸张纸板、阳极氧化铝、塑料、印刷电路板(PCB)、橡胶和化合物、木材、皮革等。

Food packaging, pharmaceutical packaging, wires and cables, glass wine bottles, mineral water bottles, Paper cardboard, anodized aluminum, plastics, printed circuit boards (PCB), rubber and compounds, wood, leather, etc.

## 半密封机柜-电动升降

### SEMI-SEALED CABINET-ELECTRIC LIFT



#### BEJ-BMF507

型 号	密封形式	立柱升降	适用波段	适用机型
Model	Sealed form	Column lifting	Laser protection	Appropriate types
BEJ-BMF507	半密封 Semi-seales	电动升降 Electric lift	1064nm/10.6um 355nm/532nm	光纤、二氧化碳、紫外、绿光、MOPA fiber、CO2、UV、GREEN、MOPA

#### 产品特点 Product Features:

电动升降立柱，提升更好的操作体验；

Electric lifting column for better operation experience.

可选自动对焦系统，一键完成立柱升降对焦；

Optional auto-focus system, one-click to complete the lifting focus of the column.

密封机柜，提升安全系数，更好的保护操作者的安全；

Seal the cabinet, improve the safety factor, and better protect the safety of the operator.

激光输出反射光隔离；

Laser output reflected light isolation.

#### 应用范围 The Product Application:

金银钻石、卫生洁具、食品包装、烟草打标、啤酒打标、饮品打标、药品包装、医疗器械、眼镜钟表、汽车配件、塑料纸料、电子五金、黄金金条、航空、飞机制造、弹体打标、防爆；

Widely used in gold and silver and diamond, sanitary ware, food packaging, tobacco marking, beer marking, drinks marking, pharmaceutical packaging, medical equipment, glasses watches and clovks, auto parts, plastic material, electronic hardware. gold bullion, aviation, aircraft manufacturing, projectile arking, explosion-proof.



## 立式密封机柜-电动升降

### VERTICAL SEALED CABINET - ELECTRIC LIFT



#### BEJ-LSMF509

型 号	密封形式	立柱升降	适用波段	适用机型
Model	Sealed form	Column lifting	Laser protection	Appropriate types
BEJ-LSMF509	全密封 Fully sealed	电动升降 Electric lift	1064nm/10.6um 355nm/532nm	光纤、二氧化碳、紫外、绿光、MOPA fiber、CO2、UV、GREEN、MOPA

#### 产品特点 Product Features:

电动升降立柱，提升更好的操作体验；

Electric lifting column for better operation experience.

可选自动对焦系统，一键完成立柱升降对焦；

Optional auto-focus system, one-click to complete the lifting focus of the column.

密封机柜，提升安全系数，更好的保护操作者的安全；

Seal the cabinet, improve the safety factor, and better protect the safety of the operator.

激光输出反射光隔离；

Laser output reflected light isolation.

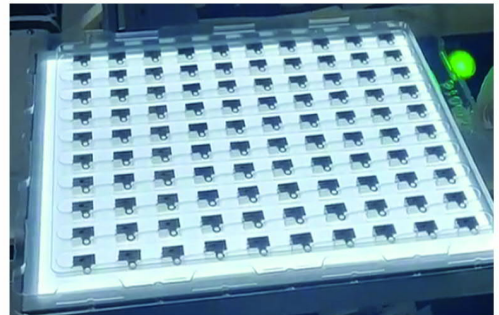
#### 应用范围 The Product Application:

金银钻石、卫生洁具、食品包装、烟草打标、啤酒打标、饮品打标、药品包装、医疗器械、眼镜钟表、汽车配件、塑料纸料、电子五金、黄金金条、航空、飞机制造、弹体打标、防爆；

Widely used in gold and silver and diamond, sanitary ware, food packaging, tobacco marking, beer marking, drinks marking, pharmaceutical packaging, medical equipment, glasses watches and clovks, auto parts, plastic material, electronic hardware. gold bullion, aviation, aircraft manufacturing, projectile arking, explosion-proof.

## 视觉定位激光打标机

### VISUAL POSITIONING LASER MARKING MACHINE



BEJ-20W、30W、50W、100WSJ

激光功率	打标幅面	打标内容	打标深度	工作电压	冷却方式	订制
Laser power	Marking area	Marking content	Marking depth	Working voltage	Cooling way	NS
20/30 50/100W	65/110/150mm 175/200/300mm	英文、数字、中文、图形 English, numbers, Chinese, graphics	0.01-1mm (视材料可调) Depending On The Material Is Adjustable	220V/50Hz	Air cooling 风冷	SP 支持

### 产品特点 Product Features:

传统激光打标存在夹具制作复杂且成本高，小尺寸或不规则产品的打标精度不好把控，产品摆放的位置和角度对打标精度的影响等缺点。视觉定位打标机可在任意角度、任意数量、任意位置来料的情况下，实现高精度定位打标。通过与振动盘、流水线、运动平台等部件的配合，可实现无人化，自动化生产，大大提高产品加工精度和生产效率。根据不同的视觉配置，打标精度可控制在0.02mm之内。

The problems existing in the traditional laser marking industry, such as the complex and high cost of fixture production, the marking accuracy of small-sized or irregular products, and the poor control of the marking accuracy of products. Disadvantages such as the influence of the position and angle of the placement on the marking accuracy. The visual positioning marking machine can realize high-precision positioning and marking under the condition of incoming materials at any angle, any number, and any position. By cooperating with vibrating plate, assembly line, motion platform and other components, unmanned and automated production can be realized, which greatly improves product processing accuracy and production efficiency. According to different visual configurations, the marking accuracy can be controlled within 0.02mm.

适用行业：批量件、工作量大、供料定位难、工件复杂多样性。如：IC，充电器头、USB、小螺丝，首饰，电容，变电压等场合。

Applicable industries: batch parts, large workload, difficult feeding positioning, complex and diverse workpieces. Such as: IC, charger head, USB, small screws, jewelry, Capacitance, variable voltage and other occasions.



## MOPA激光打标机-台式

### MOPA LASER MARKING MACHINE - DESKTOP



BEJ-20M、30M、60M、80M、100MTS

激光功率	打标幅面	打标内容	打标深度	工作电压	冷却方式	订制
Laser power	Marking area	Marking content	Marking depth	Working voltage	Cooling way	NS
20/30/60 80/100W	65/110/150mm 175/200/300mm	英文、数字、中文、图形 English, numbers, Chinese, graphics	0.01-1mm (视材料可调) Depending On The Material Is Adjustable	220V/50Hz	Air cooling 风冷	SP 支持

### 产品特点 Product Features:

MOPA光纤激光器的脉宽和频率独立可调，调整其中一项并不会影响其他激光参数。

The pulse width and frequency of the MOPA fiber laser are independently adjustable, and adjusting one of them will not affect other laser parameters.

不锈钢彩色打标、氧化铝打黑、材料深加工等。

Stainless steel color marking, alumina blackening, deep processing of materials, etc.

太阳能光伏领域、薄膜切割、薄板材料切割、焊接、材料表面清洗、精细打标、材料打深等工业应用的理想选择。

Ideal for industrial applications in the field of solar photovoltaics, thin film cutting, sheet material cutting, welding, material surface cleaning, fine marking, and material deepening.

### 应用范围 The Product Application:

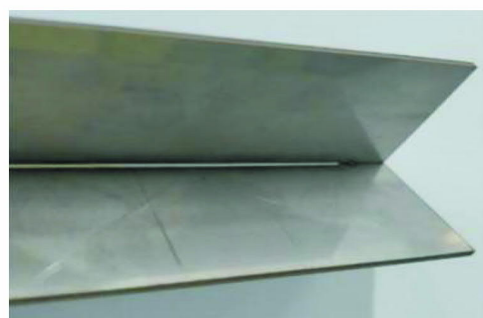
金银钻石、卫生洁具、食品包装、烟草打标、啤酒打标、饮品打标、药品包装、医疗器械、眼镜钟表、汽车配件、塑料纸料、电子五金、黄金金条、航空、飞机制造、弹体打标、防爆；

Widely used in gold and silver and diamond, sanitary ware, food packaging, tobacco marking, beer marking, drinks marking, pharmaceutical packaging, medical equipment, glasses watches and clovks, auto parts, plastic material, electronic hardware. gold bullion, aviation, aircraft manufacturing, projectile arking, explosion-proof.



## 手持式光纤激光焊接机

### HANDHELD FIBER LASER WELDING MACHINE



BEJ-SCH-1000W、1500W

激光功率	波长	光纤长度	工作方式	焊接速度	焊接厚度
Laser power	wavelength	Fiber length	Way of working	Welding speed	Welding thickness
1000W/1500W	1080nm	标配(Standard)10M 订制(Custom)15M	连续/调制 Continuous / Modulation	0-120mm/s	0.3-4mm 0.3-8mm

#### 激光焊接机描述 Laser welding machine description:

手持式激光焊接机是一种新型的焊接方式，主要针对薄壁材料、精密零件的焊接，可实现点焊、对接焊、叠焊、密封焊等，焊缝宽度小，热影响区小、变形小，焊接速度快、焊缝平整、美观，焊后无需处理或只需简单处理，焊缝质量高、无气孔、可精确控制，聚焦光点小，定位精度高，易实现自动化；

The handheld laser welding machine is a new type of welding method, mainly for the welding of thin-walled materials and precision parts. It can realize spot welding, butt welding, stitch welding, sealing welding, etc., the width of the welding seam is small, the heat affected zone is small, the deformation is small, the welding speed is fast, the welding seam is flat and beautiful, and there is no need to handle or just simple processing, high weld quality, no porosity, precise control, small focus spot, high positioning accuracy, and easy automation.

#### 激光焊接机原理 Laser welding machine principle:

激光焊接是利用高能量的激光脉冲对材料进行微小区域内的局部加热，激光辐射的能量通过热传导向材料的内部扩散，将材料熔化后形成特定熔池：

Laser welding is the use of high-energy laser pulses to locally heat the material in a small area. The energy of laser radiation is diffused into the material through thermal conduction, and the material is melted to form a specific molten pool.

## 立柱手持式激光打标机

### COLUMN HANDHELD LASER MARKING MACHINE



BEJ-20W、30W、50W、100WLZSC

激光功率	打标幅面	打标内容	打标深度	工作电压	冷却方式	订制
Laser power	Marking area	Marking content	Marking depth	Working voltage	Cooling way	NS
20/30/50/100W	65/110/150mm	英文、数字、中文、图形 English, numbers, Chinese, graphics	0.01-1mm (视材料可调) Depending On The Material Is Adjustable	220V/50Hz	Air cooling 风冷	SP 支持

### 产品特点 Product Features:

多功能一体机，大型小型零部件通用；

All-in-one machine, universal for large and small parts.

投入少，一台设备即可满足车间所有零件的打标需求；

With little investment, one piece of equipment can meet the marking requirements of all parts in the workshop..

手持激光头标准线长3米，可定制5米或更长线缆；

The standard cable length of the handheld laser head is 3 meters, and the cable of 5 meters or longer can be customized.

具备X、Y、Z三轴可调，激光头0-180度旋转，灵活适配打标位置要求；

With X, Y, Z three-axis adjustable, The laser head rotates 0-180 degrees to flexibly adapt to the location requirements of the production line.

### 应用范围 The Product Application:

金银钻石、卫生洁具、食品包装、烟草打标、啤酒打标、饮品打标、药品包装、医疗器械、眼镜钟表、汽车配件、塑料纸料、电子五金、黄金金条、航空、飞机制造、弹体打标、防爆；

Widely used in gold and silver and diamond, sanitary ware, food packaging, tobacco marking, beer marking, drinks marking, pharmaceutical packaging, medical equipment, glasses watches and clovks, auto parts, plastic material, electronic hardware. gold bullion, aviation, aircraft manufacturing, projectile arking, explosion-proof.

## 触摸屏 电动手持式 TOUCH SCREEN - ELECTRIC HANDHELD



经济型（可脱机）  
Economical (can be offline)

BEJ-725D/1470D/1580D

设备类型	打标内容	打标范围	打标深度	工作电压	冷却
Machine type	Marking content	Marking range	Marking depth	Working voltage	Cooling
Electric	英文、数字、标点、中文、LOGO English,Numbers,Punctuation,Chinese,Graphics	70x25/140x70/150x80mm	0.1-1mm (Depending on material)	220V±10% 50Hz	风冷 Air cooling

### 产品特点 Product Features:

嵌入式ARM9工业控制平台，全屏触控；

Embedded ARM9 industrial control platform, full screen touch.

材料硬度要求：HRC≤75，可选锂电池或单项交流110-240V；

Material hardness requirements: HRC≤75, Optional lithium battery or single AC 110-240V.

自动打印生产流水编号、生产日期等；

Automatically print production serial number, production date, etc.

电动针头采用电磁打标针，无需维护，不用气源；

Electric needle adopts electromagnetic marking needle, which requires no maintenance and no air supply.

7寸真彩触屏(工业级)，无需外接电脑；

7-inch true color touch screen (industrial), no external computer required.

所有主要配置均采用原装进口配置，使用寿命更长；

All main configurations are imported from the original configuration, with longer service life.

环境温度：±40℃，整体功率：≤200W，外形体积小，使用方便；

Ambient temperature: ±40℃, overall power: ≤200W, Small size and easy to use.

适合移动打码使用，一体式设计更方便；

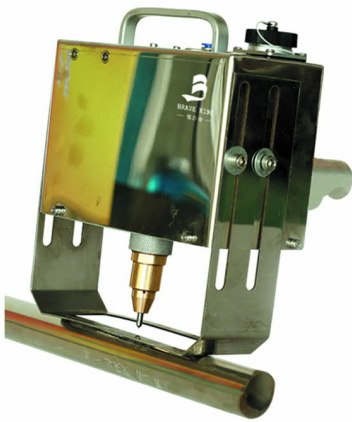
Suitable for mobile coding, integrated design is more convenient.

符合工业设计标准，可进行数据上传下载实现打印数据网络管理；

Compliance with industrial design standards, can upload and download data to achieve print data network management.



## 气动手持式 PNEUMATIC HANDHELD



经济型（可脱机）  
Economical (can be offline)

### BEJ-830P/1230P/1530P/1580P

设备类型	打标内容	打标范围	打标深度	工作电压	冷却
Machine type	Marking content	Marking range	Marking depth	Working voltage	Cooling
Pneumatic	英文、数字、标点、中文、LOGO English,Numbers,Punctuation,Chinese,Graphics	80x30/120x30/150x30 150x80mm	0.1-1mm (Depending on material)	220V±10% 50Hz	风冷 Air cooling

### 产品特点 Product Features:

气源：0.2-0.5Mpa，干燥纯净，两种语言选择，中文和英语；

Air source: 0.2-0.5Mpa, dry and pure, Two language options, Chinese or English.

打标头基础件为精密模具制造，打标字符美观、漂亮；

The marking head base is made of precision molds, which makes the marking characters beautiful and beautiful.

高速阀为美国MAC公司生产，寿命长达1-2亿次；

The high-speed valve is produced by the American MAC company, with a service life of up to 120 million times.

针头材料采用高速粉末冶金钢，硬度高；

The needle material is made of high-speed powder metallurgy steel from high hardness.

限位开关，精度高、可靠性好；

Limit switch, high precision and good reliability.

控制卡：采用16位处理器具有独立数据缓存；

Control card: 16-bit processor with independent data cache.

支持USB数据交换，方便管理打标文件；

Support USB data exchange for easy management of marking files.

输入方式：电脑键盘及条码扫描输入；

Input method: computer keyboard and barcode scanning input.

设计符合生产线设计标准，可进行数据上传下载实现打印数据网络管理，自动统计打印内容；

The design complies with the production line design standards, data uploading and downloading can be implemented to realize the print data network management, and the print contents are automatically counted.