

Brave King Laser Handheld Laser System Manual

Boot:

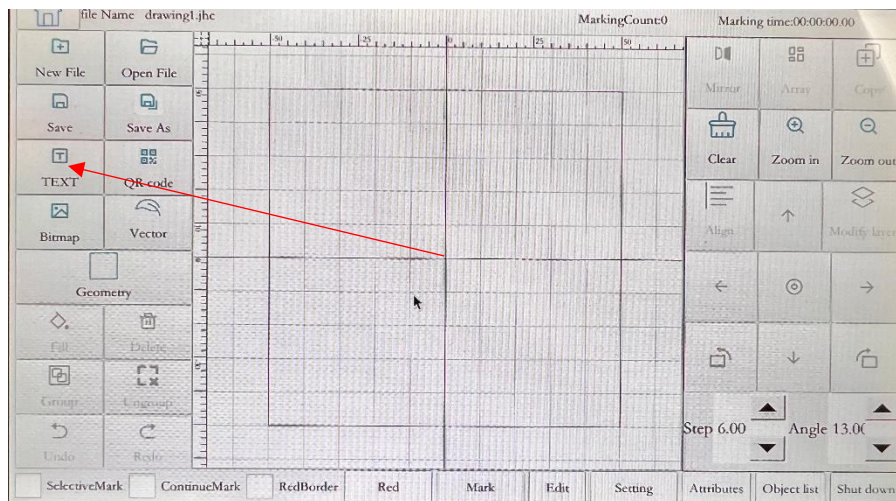
1. Plug in the power supply → turn the emergency stop button to the right → press the green button → wait for 5 seconds → complete the boot



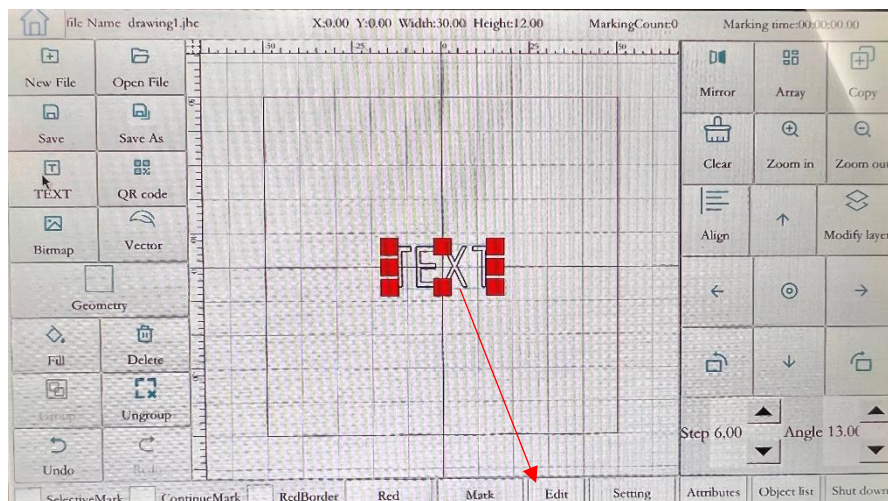
(boot interface)

Operating the laser machine: remove the lens protection cover of the hand-held laser head

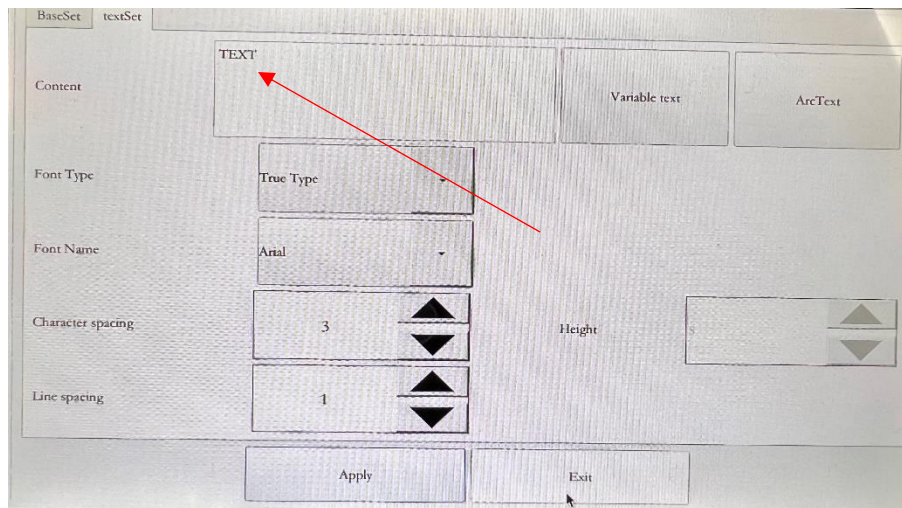
- 1、click on text



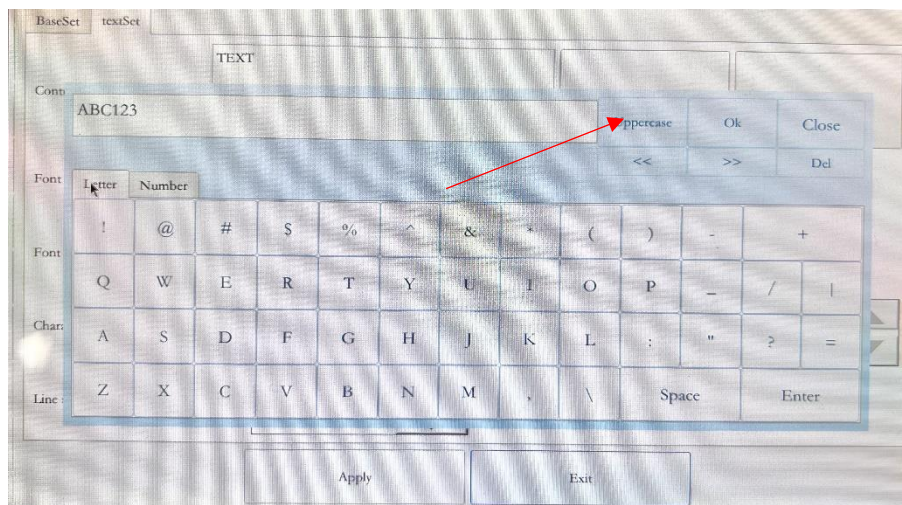
- 2、click edit



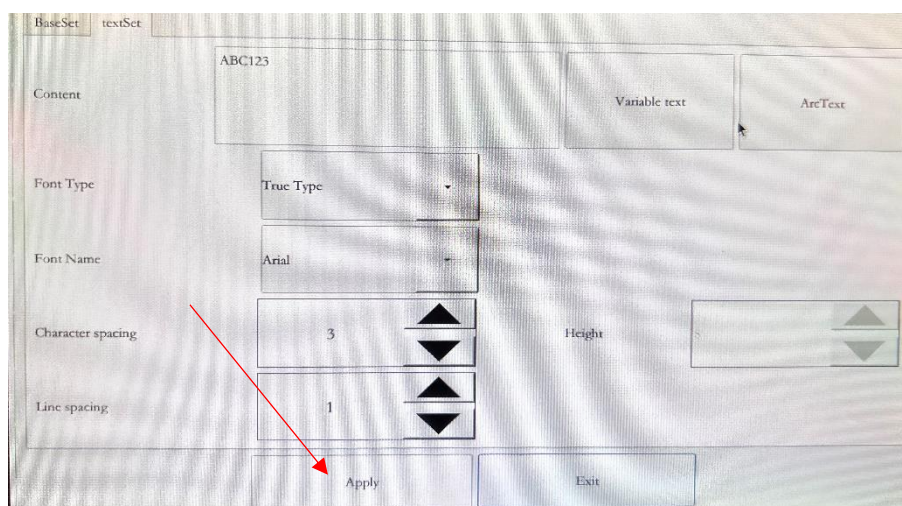
3、Click on the TEXT position,



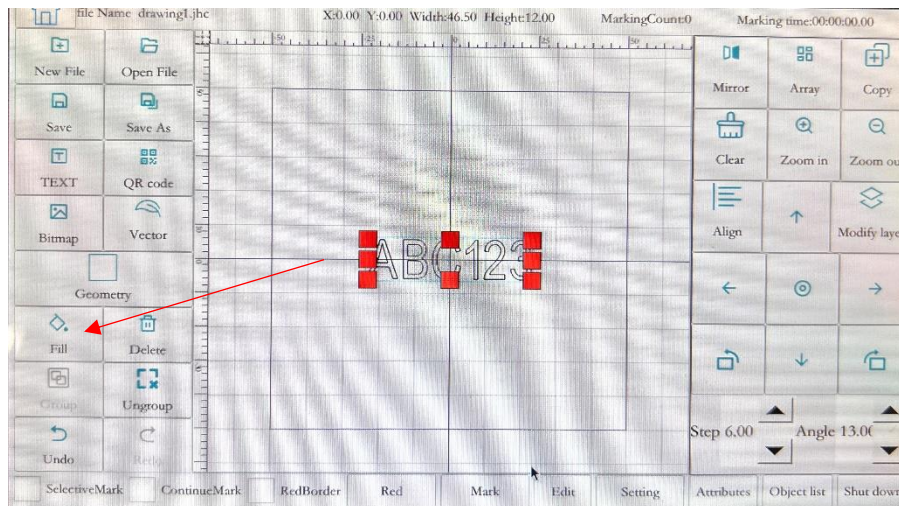
4、Enter the marking content, the position pointed by the arrow is the cycle key (lowercase, uppercase, Chinese, traditional), and confirm after input.



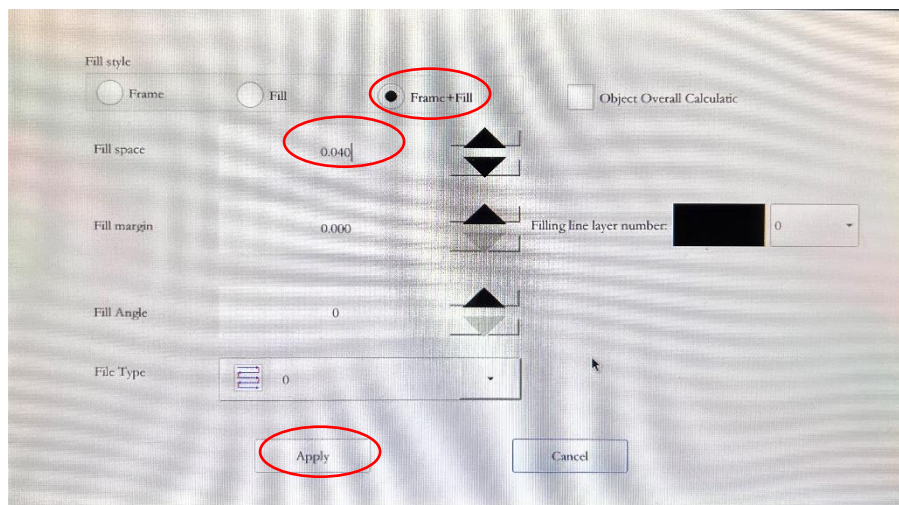
5、apply, exit



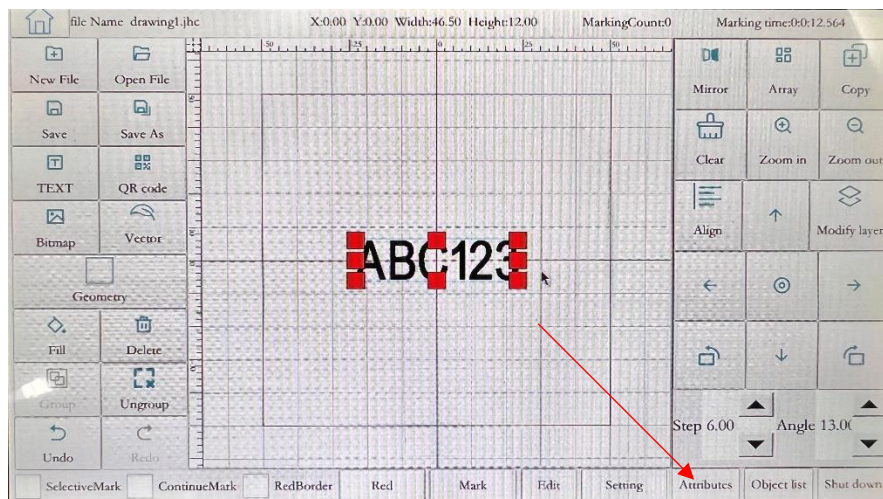
6、fill



7、Choose border+fill, interval: 0.04-0.06mm, apply



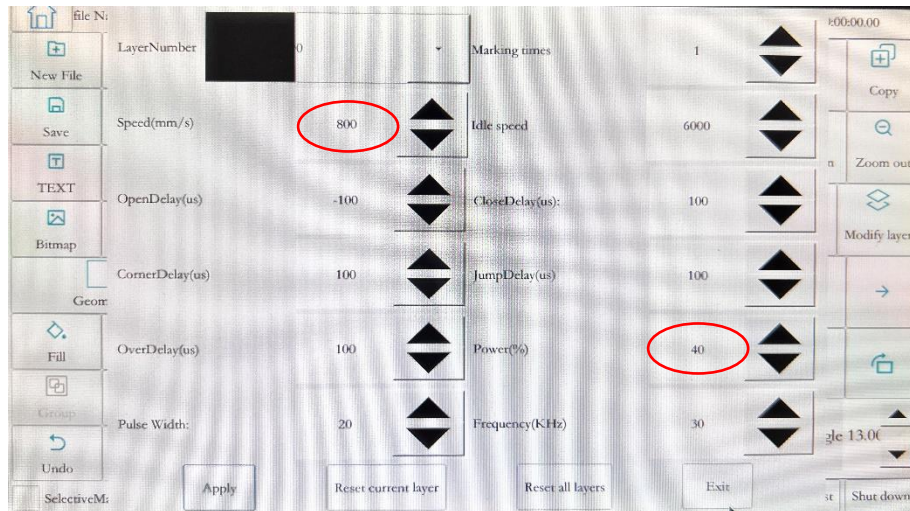
8、click Attributes



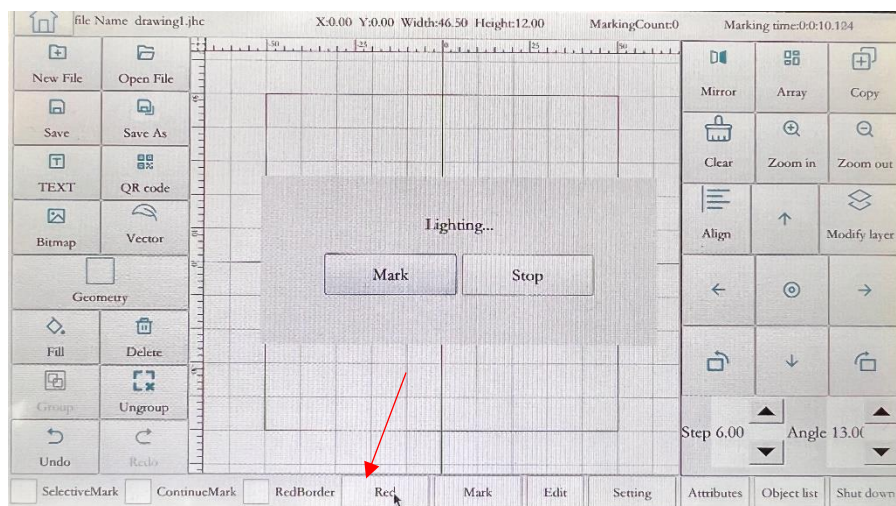
9、 Adjust marking speed: 100-3000mm/s, laser power: 10-100%. Other parameters do not adjust, apply, exit

The slower the speed, the greater the power, the deeper the marking, the faster the speed, the lower the power, and the shallower the marking.

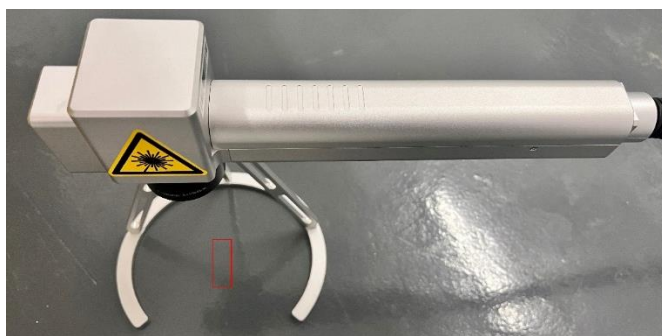
Metal parts: speed 300-500, power: 50-90%, plastic parts: speed 600-1500, power: 20-50%



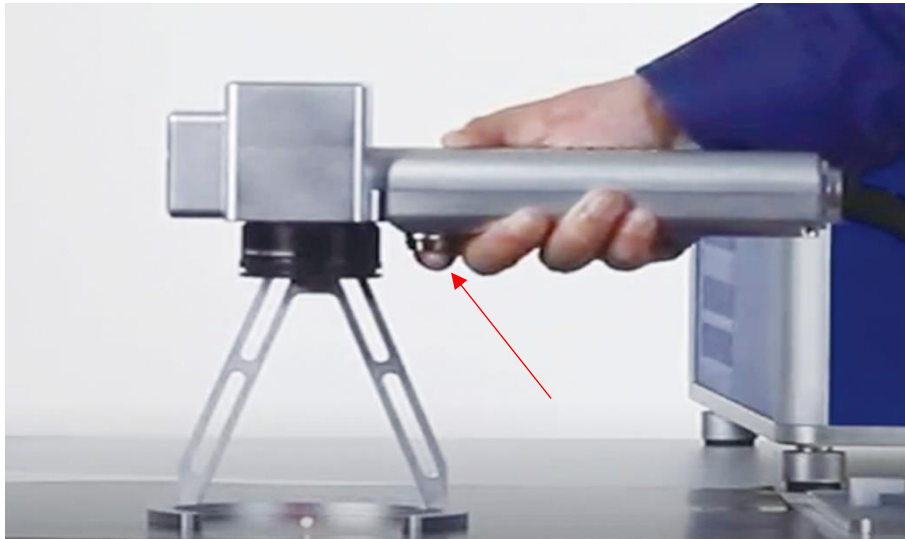
10、 Click Red



11、 The laser head will display the marking position in the red frame, which means where to hit, and the size of the frame will be as large as the text

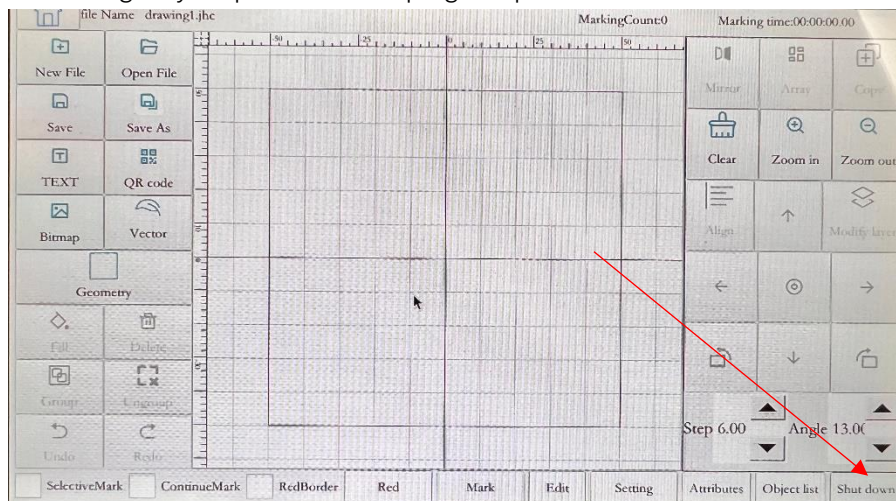


12、Press a button and start marking. Do not move your hands during the marking process until the marking is completed.



Shutdown:

1. Click to shut down, after the screen turns black → press the green button → press the emergency stop switch → unplug the power.



Congratulations, you will use this laser marking machine.

Precautions:

The laser head and the control box are connected to the black tube, which is forbidden to be stepped on, folded in half, and can be bent naturally.

If you have any questions, please feel free to contact Brave King Laser after-sales service engineers

Company name: Brave King Laser Technology (Dalian) Co., Ltd.

Contact: Mr. Xu

Tel: +86 13324205050 Office: +86 411 87635055

Address: No. 10, Shengsheng 3rd Road, Dalian Economic and Technological Development Zone, Liaoning Province, China